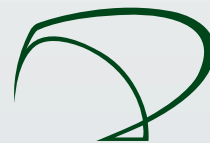


CAN-AM

2-2500
Series Bearing

SUPPLY SERVICES LTD



Phone 0800 102 112 - www.supplyservices.co.nz

CAN-AM Products

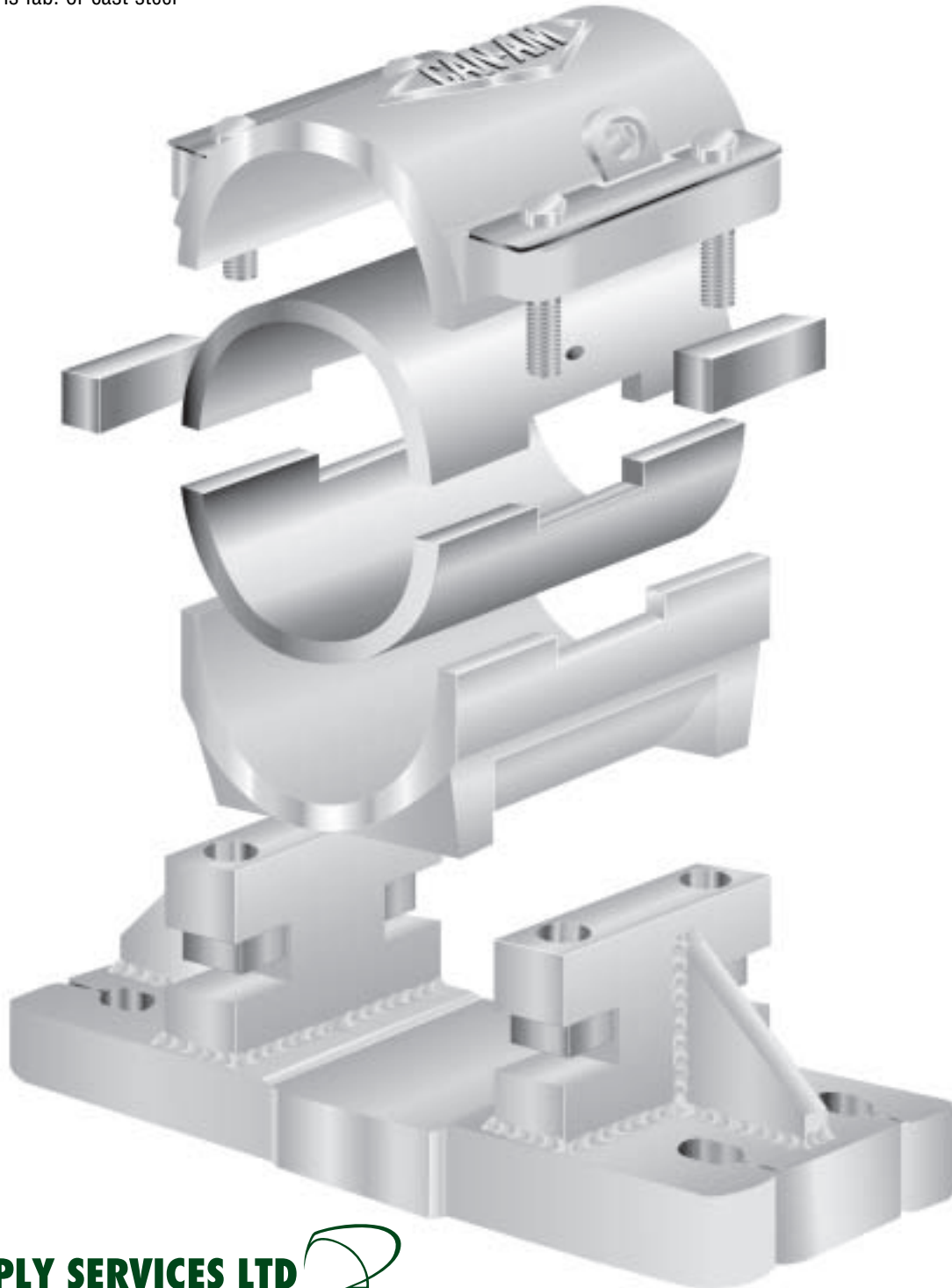
visit us at www.can-amchains.com

2500 SERIES BEARINGS

2500 SERIES CAN-AM BEARINGS

features include:

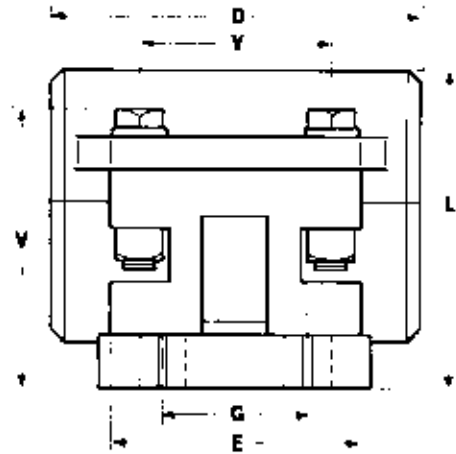
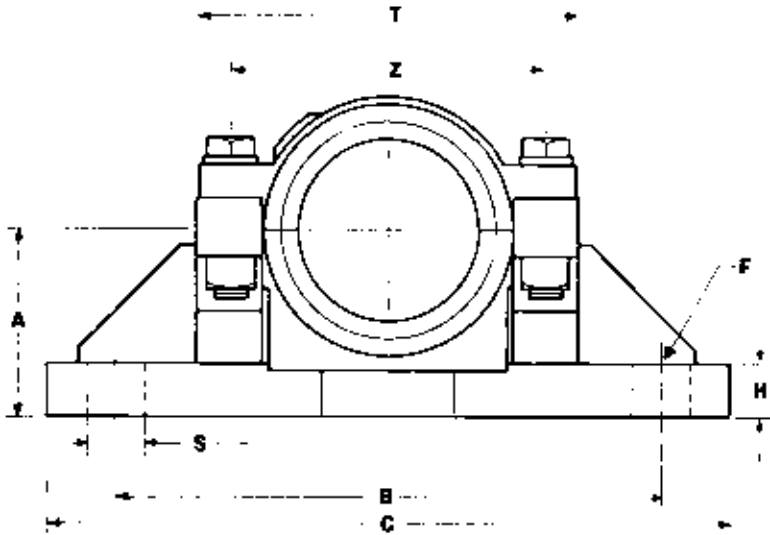
- Less down time: 3 piece design allows for quick repair of bearing while base remains in place. Simply jack up shaft 1/4", lift out cap and insert, and replace.
 - Recessed grease fittings in castings to prevent damage.
 - Excellent for log deck application and any larger slow-moving shafts, rollcases, etc.
 - Can be mounted in any position
 - Base is fab. or cast steel
- 4 choices of bushing material:
 - urethane
 - bronze
 - babbitt
 - zinc aluminum
 - Steel base and ductile iron insert.



SUPPLY SERVICES LTD 

Phone 0800 102 112 - www.supplyservices.co.nz

2500 SERIES BEARINGS
2500 SERIES CAN-AM BEARINGS



SUPPLY SERVICES LTD 
 Phone 0800 102 112 - www.supplyservices.co.nz

2-2500 SERIES (4 BOLT.)

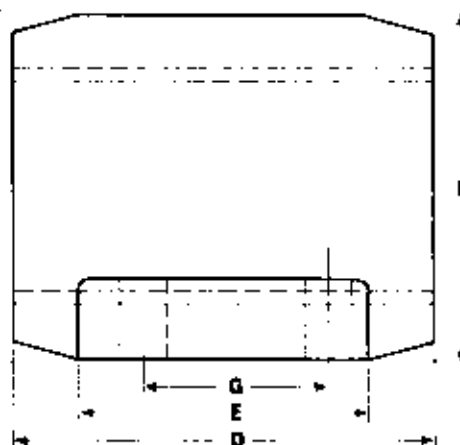
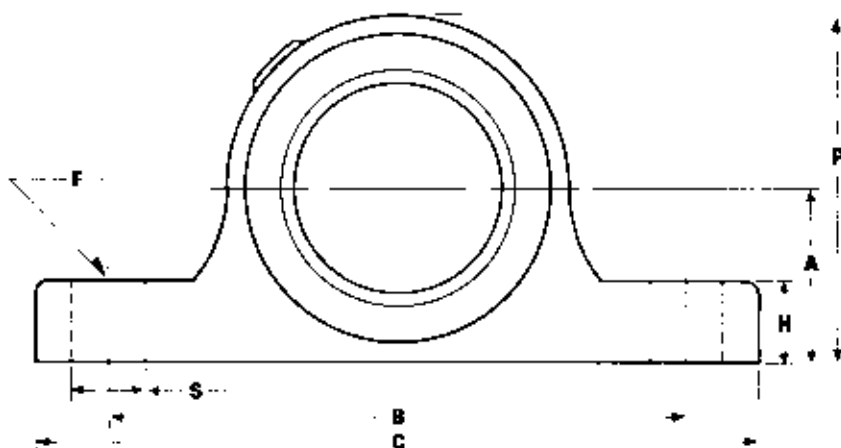
	2 7/16	2 15/16	3 7/16	3 15/16	4 7/16	4 15/16	5 7/16	5 15/16	6 7/16	6 15/16	7 7/16 7 15/16 8
A	2 3/4	3 1/4	3 1/2	3 3/4	4 1/8	4 1/2	5 1/2	5 1/2	6 1/2	6 1/2	7
B	8	8 3/4	10 1/2	12	13 1/2	15	16 1/2	16 1/2	19	19	21 1/2
C	10 1/4	11	13	14 3/4	16 1/2	18	20 1/2	20 1/2	23	23	26
D	5	6	7	8	9	10	12	12	14	14	16
E	3 3/4	4 1/4	4 3/4	5 1/4	6 1/4	7	8 1/2	8 1/2	10	10	11
F	5/8	5/8	3/4	3/4	7/8	7/8	1 1/8	1 1/8	1 1/4	1 1/4	1 1/4
G	2	2 1/2	2 3/4	3	3 1/2	4	5	5	6	6	6 3/4
H	1	1	1	1 1/4	1 1/4	1 1/4	1 1/2	1 1/2	2	2	1 3/4
L	5	5 5/8	6 3/8	6 7/8	7 5/8	8 1/2	10	10	11 1/2	11 1/2	13
S	1	1	1 1/4	1 3/8	1 1/2	1 5/8	1 7/8	1 7/8	2	2	2 1/4
T	5 5/8	6	7 1/4	7 5/8	8 7/8	9 1/2	12	12	14 1/8	14 1/8	17
V	4 3/8	5	5 1/4	5 5/8	6	6 1/2	7 5/8	7 5/8	8 3/4	8 3/4	9 3/4
Y	2 3/4	3 3/16	3 5/8	4	4 7/8	5 1/2	6 3/4	6 3/4	7 5/8	7 5/8	8 1/2
Z	4 3/4	5	6	6 1/2	7 1/2	8	10 1/8	10 1/8	12	12	14 3/8
WT	25	35	46	64	90	115	200	200	300	300	480

2500 SERIES (2 BOLT.)

	2 7/16	2 15/16
A	2 3/4	3 1/4
B	8	9 1/2
C	10 1/4	12 1/4
D	5	6
E	3 3/4	4 1/4
F	3/4	7/8
G	-	-
H	1	1
L	5	5 5/8
S	1 1/8	1 3/8
T	5 5/8	6
V	4 3/8	5
Y	2 3/4	3 3/16
Z	4 3/4	5
WT	25	35

1000 SERIES BEARINGS

1000 SERIES CAN-AM BEARINGS



2-1000 SERIES — 4 BOLT BASE

	2 7/16	2 15/16	3 7/16	3 15/16	4 7/16	4 15/16
A	2 1/4	2 1/2	3	3 1/4	4 1/8	4 1/2
B	7	8 3/4	10	11	13 1/2	15
C	9 1/4	11 1/4	12 1/2	13 3/4	16 1/2	18
D	5	6	7	8	9	10
E	4	4 1/2	5	5 1/2	6 1/4	7
F	5/8	5/8	3/4	3/4	7/8	7/8
G	2	2 1/2	2 3/4	3	3 1/2	4
H	1 1/8	1 1/4	1 3/8	1 1/2	1 3/4	1 7/8
P	4 3/8	4 7/8	6	6 1/2	7 7/8	8 1/2
S	1 1/8	1 1/8	1 1/4	1 3/8	1 1/2	1 5/8
WT. lbs.	14	24	36	51	75	100

1000 SERIES — 2 HOLE BASE

1 15/16	2 3/16	2 7/16	2 15/16
1 3/4	2	2 1/4	2 1/2
6	6 1/2	7	8 1/2
8	8 1/2	9 1/4	11 1/4
4	4 1/2	5	6
2 3/4	3	3 1/4	4
5/8	5/8	3/4	7/8
-	-	-	-
7/8	1	1 1/8	1 1/4
3 1/2	3 7/8	4 3/8	4 7/8
1	1	1 1/8	1 3/8
8	11	14	24

Available in Babbitt, Urethane, Zinc-Aluminum & Bronze bushed. Grease fittings are 45° and countersunk into casting to prevent damage. All bearings have ductile housings, and have machine mounting surfaces.

SUPPLY SERVICES LTD

Phone 0800 102 112 - www.supplyservices.co.nz

BEARING LOAD RATING

BEARING LOAD RATING TABLES

The following load rating tables apply when the following installations and operating conditions are met:

1. Maintain adequate grease lubrication. Use of EP grease is recommended.
2. Align bearings with shaft for uniform load distribution.
3. Normal running loads should not exceed ratings shown in load tables.
Starting & occasional peak loads should not exceed ratings by more than 100%.
4. The journal shaft surface should be equal to that of commercial steel shafting (about 32 micro-inches) and the diameter within the tolerances of commercial steel shafting.
5. Ambient temperature should not exceed 130° F. for babbitt, 300° F for bronze, 250°F for ZA and 225° F for urethane bushed bearings. If the shaft transmits heat from a source such as an oven, the shaft temperature at the bearing should not exceed these temperatures.
6. Where thrust loads are present, install a bronze washer and fasten it in place with a set collar against end of bearing. The bearing ends are finished.

RADIAL LOAD RATINGS FOR RIGID BRONZE OR ZA12* SLEEVE BEARINGS

Shaft Size Inches	Shaft Speed, RPM (load rating in lbs.)								
	10	50	100	150	200	250	300	350	400
1 15/16 - 2	1920	1880	1830	1790	1740	1690	1640	1590	1500
2 3/16 - 2 1/4	2440	2390	2320	2240	2170	2100	2030	1960	1390
2 7/16 - 2 1/2	3020	2940	2850	2750	2650	2560	2460	1860	1090
2 11/16 - 2 3/4	3660	3560	3430	3300	3170	3040	2620	1580	545
2 15/16 - 3	4370	4230	4060	3890	3720	3550	2440		
3 7/16 - 3 1/2	5960	5740	5470	5200	4930	3610	1440		
3 15/16 - 4	7790	7460	7060	6650	5910				
4 7/16 - 4 1/2	9860	9400	8820	8240	5400				
4 15/16 - 5	12180	11540	10740	9950	4090				
5 7/16 - 5 1/2	14740	13880	12820	10348	1820				
5 15/16 - 6	17530	16420	15040	9520					
6 7/16 - 6 1/2	20560	19150	17390	7900					
6 15/16 - 7	23840	22070	19870	5350					
7 7/16 - 7 1/2	29170	26850	23950	1880					
7 15/16 - 8	31090	28450	23410						

Load ratings are based on industry standards by the Mechanical Power Transmission Association

* Zinc Aluminum alloy (ZA12) has the same wear property as 660 Bronze

SUPPLY SERVICES LTD 

Phone 0800 102 112 - www.supplyservices.co.nz

RADIAL LOAD RATINGS FOR RIGID BABBITT SLEEVE BEARINGS

Shaft Size Inches	Shaft Speed, RPM (load rating in lbs.)								
	10	50	100	150	200	250	300	350	400
1 15/16 - 2	1150	1110	1060	1010	965	915	865	815	730
2 3/16 - 2 1/4	1460	1400	1330	1260	1190	1120	1050	975	410
2 7/16 - 2 1/2	1800	1730	1630	1530	1430	1340	1240	645	
2 11/16 - 2 3/4	2190	2080	1950	1820	1690	1560	1150	110	
2 15/16 - 3	2600	2470	2300	2130	1960	1790	675		
3 7/16 - 3 1/2	3550	3330	3060	2790	2520	1200			
3 15/16 - 4	4640	4310	3910	3500	2760				
4 7/16 - 4 1/2	5870	5410	4830	4250	1410				
4 15/16 - 5	7240	6600	5810	5010					
5 7/16 - 5 1/2	8750	7900	6840	4360					
5 15/16 - 6	10410	9300	7910	2390					
6 7/16 - 6 1/2	12200	10790	9020						
6 15/16 - 7	14120	12360	10150						
7 7/16 - 7 1/2	17270	14950	12050						
7 15/16 - 8	18390	15750	10710						

Load ratings are based on industry standards by the Mechanical Power Transmission Association

RADIAL LOAD RATINGS FOR RIGID URETHANE SLEEVE BEARINGS

Shaft Size Inches	Shaft Speed, RPM (load rating in lbs.)								
	10	50	100	150	200	250	300	350	400
1 15/16 - 2	920	890	850	810	770	730	690	650	580
2 3/16 - 2 1/4	1170	1120	1060	1010	950	900	840	780	330
2 7/16 - 2 1/2	1440	1380	1300	1220	1140	1070	990	520	
2 11/16 - 2 3/4	1750	1660	1520	1460	1350	1250	920	90	
2 15/16 - 3	2080	1980	1840	1700	1570	1430	540		
3 7/16 - 3 1/2	2840	2660	2450	2230	2020	960			
3 15/16 - 4	3710	3450	3130	2800	2210				
4 7/16 - 4 1/2	4700	4330	3860	3400	1130				
4 15/16 - 5	5790	5280	4650	4010					
5 7/16 - 5 1/2	7000	6320	5470	3490					
5 15/16 - 6	8330	7440	6330	1910					
6 7/16 - 6 1/2	9670	8630	7220						
6 15/16 - 7	11300	9890	8120						
7 7/16 - 7 1/2	13820	11960	9640						
7 15/16 - 8	14710	12600	8570						

Load ratings are based on industry standards by the Mechanical Power Transmission Association

SUPPLY SERVICES LTD 

Phone 0800 102 112 - www.supplyservices.co.nz

TERMS AND CONDITIONS

General

These conditions supersede those contained in all previous quotations, orders and agreements whether written or oral and shall be the only conditions governing future transactions between the seller and the buyer, unless otherwise specifically agreed to in writing by the seller. Clerical errors are subject to correction. Time is of the essence hereof.

Quotation Period

A quotation is valid for a period of Thirty (30) days from quotation date. It is subject to partial acceptance only upon written consent of the seller.

Delays

Delivery dates are estimates only and are predicated on conditions as known to the Seller at the time of the quotation and the Seller shall not be liable for any direct, indirect or consequential damages due to delays or inability to perform caused by factors beyond its control including but not limited to acts of God, flood, war, riot, fire, accident, explosion, labour trouble, acts of Government, delay or default by sub-contractors or suppliers of material or services or transportation difficulties. Delivery dates shall be extended by the period of such delay.

Terms

All orders are subject to approval of Seller's Credit Department. All payments past due shall bear interest at the rate of 1-1/2% per month (equivalent to 18% per annum) until paid. Orders cannot be cancelled or changed or deliveries deferred, except on terms satisfactory to the Seller. If the Buyer fails to pay an installment of the purchase price when due, the Seller may stop work and, at the Seller's option, the entire purchase price shall become immediately due and payable.

Payment

All prices quoted are F.O.B. Seller's plant. Sale shall be deemed complete and the property in the goods pass when the goods are ready for delivery. Goods shall be invoiced when ready for delivery and payment thereof shall be net cash Thirty (30) days from the date of invoice. The Seller reserves the right to alter the terms of payment or to require payment prior to the time of delivery if, in the Seller's opinion, the Buyer's financial condition or other circumstances do not warrant delivery on the terms originally agreed upon.

Taxes

Prices quoted are exclusive of all sales and excise taxes, customs duties or other taxes or levies, and the Buyer is to be responsible therefor.

Shipment

If transportation is quoted, the Seller shall decide carrier and method of shipment unless Buyer's instructions have been agreed to by the Seller prior to quotation. The Seller will not be responsible for any loss or damage to the goods after they are ready for delivery to carrier and the Buyer agrees to assume such risks, insurance premiums, special crating or shipping charges shall be arranged and paid for by the Buyer.

Escalation

Prices quoted are based on correct labour rates and material costs and, if applicable, current freight rates, customs duties, taxes and foreign exchange rates and are therefore subject to change to the extent of any change (either before or after acceptance of this quotation and during the contract period) in any of the foregoing items.

Inspection

If Buyer reserves the right to inspect the goods prior to delivery such inspection shall be made within Seven (7) days of Buyer receiving written notice from Seller that the goods are ready for delivery; otherwise Buyer shall be deemed to have waived all rights of inspection and delivery to the Buyer shall be deemed to be complete at the end of the Seven (7) day period.

Storage and Return of Goods

If the Buyer is unable to remove the goods within Thirty (30) days of their delivery ex Seller's plant, the Seller shall be entitled to charge storage on the goods. Goods cannot be returned except upon Seller's written consent, and will be subject to a restocking charge equal to 25% of the Buyer's invoice.

Patents

The Buyer agrees to save the Seller harmless from all patent infringement claims, liability and expense resulting from the Seller's compliance with the Buyer's specifications or designs now or hereafter forming a part of any work or from written instructions of the Buyer directing the manner in which the Seller shall perform any work.

Applicable Law

Any contract between the Buyer and Seller shall be subject to and construed in accordance with the laws of the state or province wherein the goods were supplied from.

Specifications

In accordance with the policy of the Seller to constantly improve its products, the specifications, designs, and dimensions contained in this catalog are subject to change without notice.

Responsibility

The Seller declines responsibility for any damages incurred as a result of improper installation of attachments installed by firms other than the Seller.

Packaging

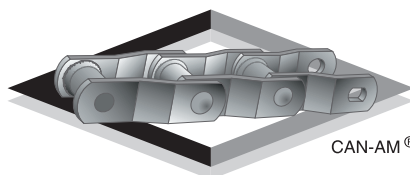
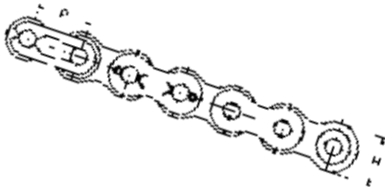
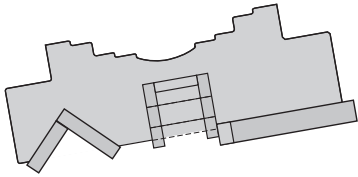
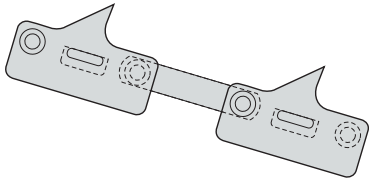
Chain is shipped in wired bundles of approximately 10 foot lengths. Any other lengths required shall be made on Buyer's authorization at time of order.

Dimensions and Weights

Tabular dimensions and weights are approximate and non-binding. Design improvements may result in variations to published figures. Verification is recommended.

SUPPLY SERVICES LTD 

Phone 0800 102 112 - www.supplyservices.co.nz



PRODUCTS AND SERVICES PROVIDED BY CAN-AM CHAINS

SHARP CHAINS D.L.I. CHAINS AUTO ROTATE CHAINS

CAN-AM Chains make a full range of specialty chain and flights to suit all facets of industry. Pictured here are two examples of high speed scanner/canter feed chains for the lumber industry.

CAN-AM FABRICATED STEEL SPROCKETS

Normally made of mild steel plate. Heat treated and induction hardened plate sprockets with hardnesses from 360 to 500 BHN are available.

CAN-AM ROLLER CHAIN

Built to our exacting standards and requirements to exceed ANSI standards. These chains are all made with solid rollers and bushings.

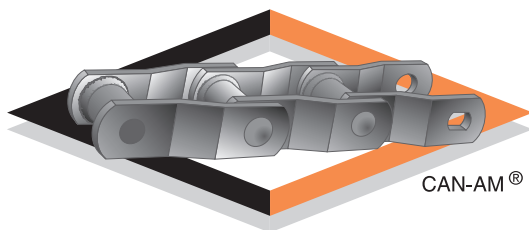
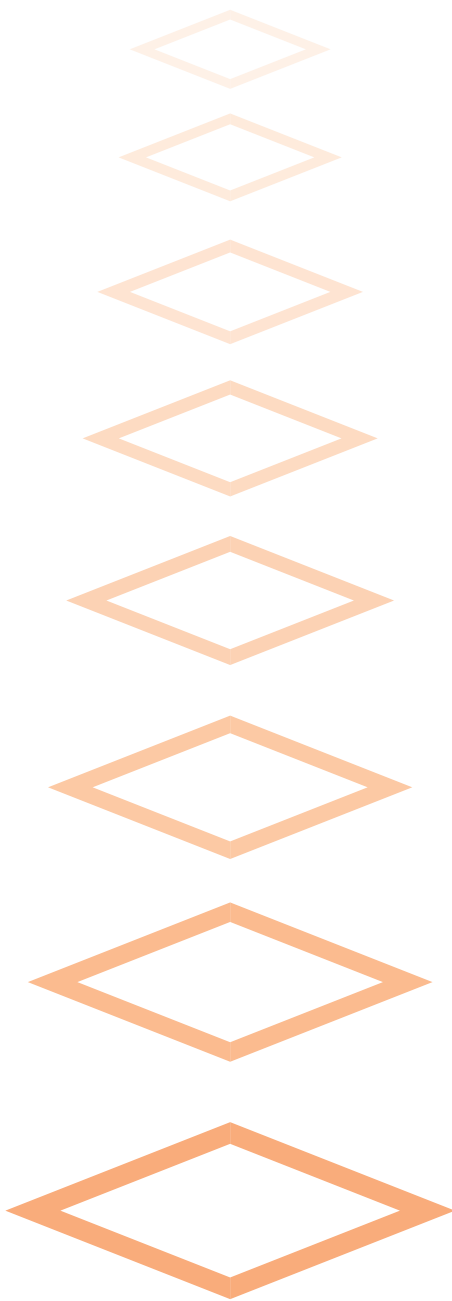
SPLIT SLEEVE BEARINGS 2-2500 SERIES

CAN-AM manufactures a full line of these bearings and stocks them with liners of polyurethane, bronze, babbitt or Zinc Aluminum.

Please contact us for further information or visit our web site at www.can-amchains.com

SUPPLY SERVICES LTD 

Phone 0800 102 112 - www.supplyservices.co.nz



CAN-AM

Challenge Us Today!

SUPPLY SERVICES LTD 

Phone 0800 102 112 - www.supplyservices.co.nz