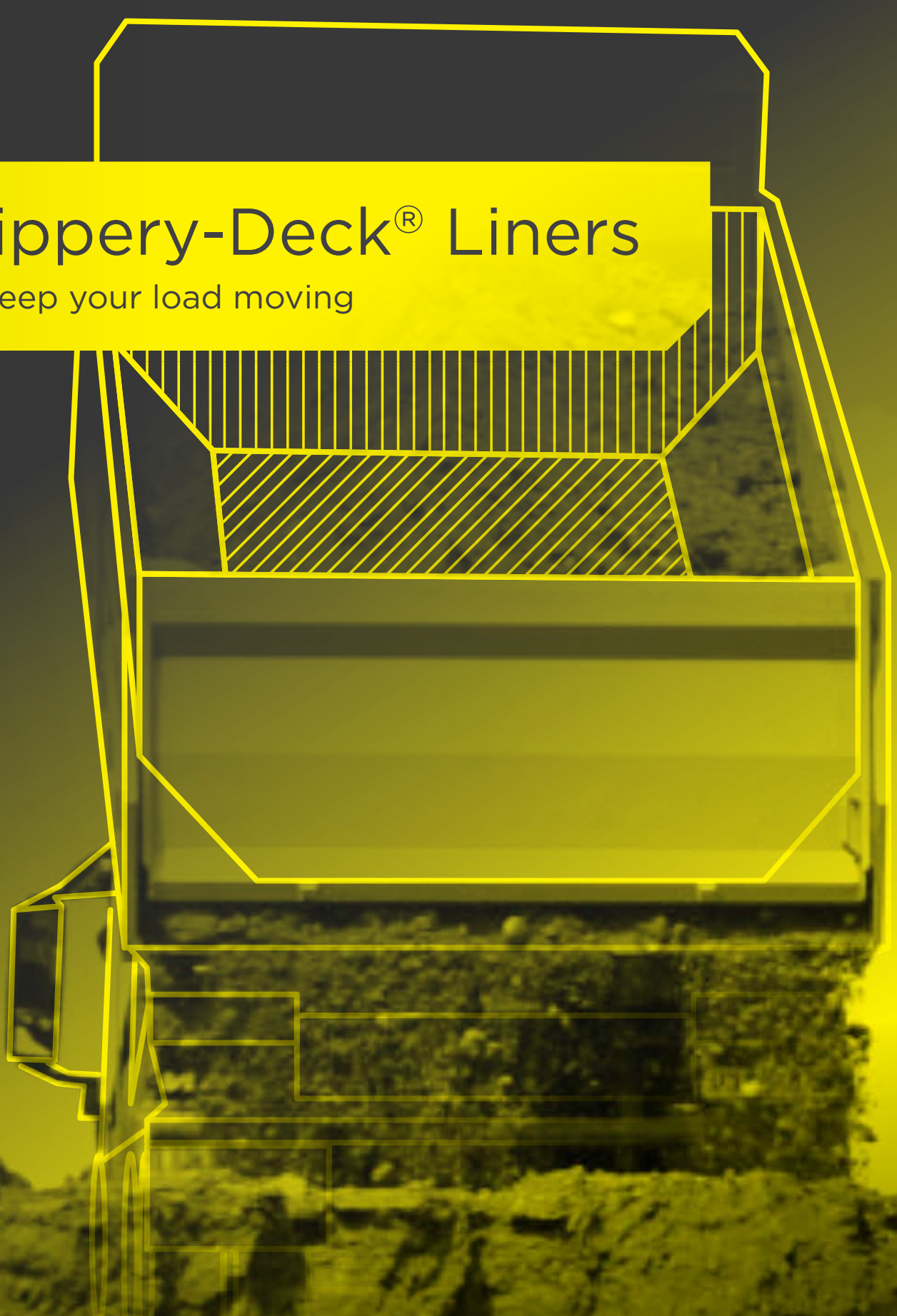


Slippery-Deck® Liners

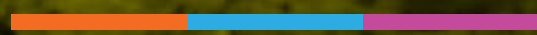
To keep your load moving



SLIPPERY-DECK®
PLASTIC TRUCK BODY LINERS



SUPPLY SERVICES
performance engineering products



SUPPLY SERVICES

performance engineering products

Truck Liners

To keep your load moving



Slippery-Deck® – the original truck and trailer deck lining solution for NZ. Our super slippery truck deck liners are manufactured in the USA from premium grades of PE polymer. Eliminate sticking, reduce carry back, stop shoveling, improve your productivity and make more money!

01 SLIPPERY-DECK® HD

06 CUSTOM
SLIPPERY-DECK®

02 SLIPPERY-DECK®
HD-HT

07 ADDITIONAL
APPLICATIONS

05 SLIPPERY-DECK®
OFF ROAD

07 FREQUENTLY
ASKED QUESTIONS

06 SLIPPERY-DECK® MD



Why use Slippery-Deck® Liners?

+ Virtually eliminates sticking

- Loads slide out easier
- Dump loads quicker
- Reduce wear and tear
- Move more loads and make more money

+ Slippery-Deck® will dramatically reduce your tipping angle

- Tip under warehouse roofs!
- Tip under power lines!
- Reduce chances of a roll over!

+ Slippery-Deck® Liners are covered by our manufacturer's warranty

Full warranty for durability and protection.

+ Our experienced installers work nationwide!

Awesome!

Whatever you're engineering, we can help.

Our customer support is only a phone call away -

📞 0800 102 112



Slippery-Deck® HD

Heavy Duty (HD), UHMW-PE polymer for the most demanding applications. Our most popular product.

It contains a small amount of re-processed UHMW-PE for cost effectiveness and a release agent for enhanced non-stick properties. It is 3-4 times more wear resistant than the Slippery-Deck® MD Liner.

SPECIFICATIONS

THICKNESS	12.7mm
WIDTH	3050mm
LENGTH	up to 45m
WEAR RESISTANCE	High



Slippery-Deck® HD-HT

Heavy Duty (HD), High Temperature (HT), heat-stabilised UHMW-PE polymer for the most demanding applications.

It is the only liner for use when hauling hot asphalt. It can be cut, formed and plastic welded to provide a slick seamless liner in your truck body.

SPECIFICATIONS

THICKNESS	12.7mm
WIDTH	3050mm
LENGTH	up to 45m
WEAR RESISTANCE	Best
HOT ASPHALT	Yes



CAD

We can manipulate your CAD models and drawings or create them for you from your parts or sketches. If required, we can design your parts from scratch.

Our CAD engineers are able to design complex parts and assemblies from our range of engineering materials that are in use across all industry sectors. They even design sprockets and bottling line change parts.

Conventional & CNC machining

Our three machining shops located across New Zealand is where the magic happens.

As well as conventional turning and milling capabilities, we have skilled CNC operators who can turn your material or idea into components. Our machine shops can make finished parts from any of our engineering materials or composites.

Full Service Start to finish, nationwide.

All three of our nationwide branches offer CAD design, manual and CNC machining services; all are fully stocked with engineering plastics, chains, sprockets and associated parts. No matter where you are in the country, we have the people and the know-how to help you out.

SUPPLY SERVICES performance engineering products

Cut to size plastics

Plastic rods, tubes, sheets and films- we have every size, grade and type of engineering plastic available from leading global manufacturers. We can provide off-the-shelf or manufactured parts to your specifications.

We also stock a comprehensive range of specialist OEM plastic products for the wood processing industry. No matter where you are in New Zealand, we're right there with you.

Reverse engineering

Give us your part and we'll recreate it, even if its broken or worn out.

We've invested heavily in technology and training to help our customers replace old parts with new ones. We can hard probe or use contactless 3D laser scanning techniques to digitise your component and reverse engineer it, and then in the machine shop make the parts.

Welding, Assembly & Fabrication

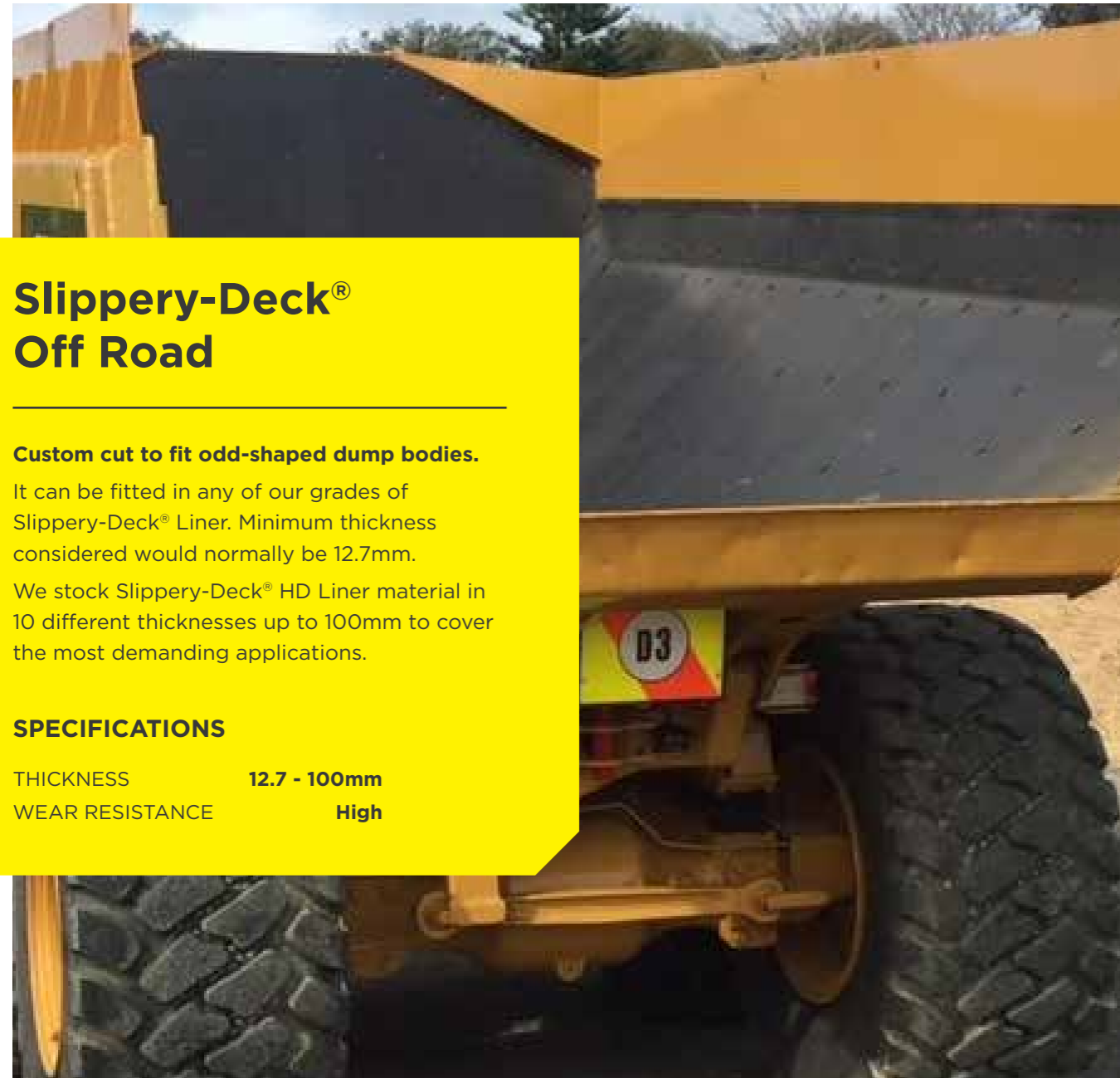
We work across all industry sectors manufacturing high quality parts, fabricating and assembling them at our site to reduce interruption to your production.

Inventory & Warehousing

Do you need a regular supply of components but have nowhere to store them?

We can manufacture your parts, stock them in our secure warehousing facilities and dispatch when you need them, charging you as you go.

Our end-to-end procurement, storage and installation service eases cashflow and ensures your parts are on hand when you need them.



Slippy-Deck® Off Road

Custom cut to fit odd-shaped dump bodies.

It can be fitted in any of our grades of Slippy-Deck® Liner. Minimum thickness considered would normally be 12.7mm. We stock Slippy-Deck® HD Liner material in 10 different thicknesses up to 100mm to cover the most demanding applications.

SPECIFICATIONS

THICKNESS	12.7 - 100mm
WEAR RESISTANCE	High



Before

At least 3m³ was going back for the ride

After

Operator estimated 8 weeks pay back



Slippy-Deck® MD

Slippy-Deck® (MD) Medium Duty is an HMW-PE polymer suitable for non-abrasive products such as snow, dirt, clay, grain, wood chip etc.

Loads slide easier. Protects your truck deck. UV stabilised. 3-4 times less wear resistant than Slippy-Deck® HD.

SPECIFICATIONS

THICKNESS	9.5mm
WIDTH	3000mm
LENGTH	up to 45m
WEAR RESISTANCE	Good



Custom Slippy-Deck®

Slippy-Deck® HD-HT and HD grades start at 6mm thick and are available up to 4060mm wide.

This additional width allows Slippy-Deck® HD-HT and HD to cover larger areas, allowing for truck and trailer side walls to be lined higher for specific applications.

SPECIFICATIONS

THICKNESS	From 6mm
WIDTH	4060mm

Additional Slippery-Deck® Applications

Slippery-Deck® can be used in many other applications where toughness, abrasion resistance, a non-stick surface and a low coefficient of friction is required.

It also has excellent chemical resistance. Examples include; digger buckets, hopper liners, slide pads, conveyor belt pulleys, wear pads, screw conveyor linings.



Hopper Liners



Screw Conveyor Linings



Digger Buckets



Conveyor Belt Pulleys



Slide Pads



Wear Pads

Frequently asked questions

+ What is UHMWPE?

UHMWPE stands for **ultra high molecular weight polyethylene**. It is the most abrasion resistant grade of polyethylene by far and is often referred to as the worlds toughest polymer.

+ Where is Slippery-Deck® made?

Slippery-Deck® is made in the USA by Polymer Industries Inc., a world leader in the manufacturing of polyolefins.

+ How much weight will a Slippery-Deck® Liner add to my trailer?

The standard 12.7mm x 3,050mm product will add approximately 40kg per metre of Liner.

+ How long will a Slippery-Deck® Liner last?

This depends on what you are dumping, and how often and the condition of your deck. Generally speaking a HD-HT liner will last 2x longer than steel and 4x longer than aluminium.

+ Can a Slippery-Deck® Liner be repaired?

Yes. Liners sometimes get damaged by diggers buckets etc. We can cut pieces out and weld new pieces in.

+ What can I do to make my Slippery-Deck® Liner last longer?

Check the Liner regularly and remove any material such as stones that may have gotten underneath it (your installer can show you how to do this). Foreign matter under the Liner will cause high spots that will prematurely wear through.

+ Is there anything I shouldn't put on a Slippery-Deck® Liner?

Sharp objects like demolition material can damage or puncture a Liner. If you have to occasionally cart this type of material then you can put down a layer of finer crushed material first.

+ How is a Slippery-Deck® Liner held in my trailer?

Normally the Liner is bolted through the deck at the head board and sits under a steel or aluminium cap that runs down each side of the walls. Plastic Liners expand and contract with changes in temperature during the day, so they can only be fastened at one end. The alternative, as is done in OFF ROAD Liners, is to completely fasten them down.

+ Can I get Slippery-Deck® Liner in any other colours?

Yes. Dark grey, black or white are the standard colours but if you need a corporate colour we can do that too. You may have already seen our red and blue Liners on the road.

+ How long does it take to install a Slippery-Deck® Liner?

An experienced team of 2 people can install a Liner in 4-8 hours.

+ Will I know anyone who has one of your Liners in their truck or trailers?

Most likely as we have been fitting Slippery-Deck® for 20 years in New Zealand. These are some of our satisfied customers:

Fulton Hogan, Taylor Bros Transport, Winstone Aggregates, Stevenson Group, Higgins Contractors, P&I Pascoe, Warren McLean Cartage, J. Swap Contractors, Inframax Construction, Atlas Concrete, Firth, Road Metals, Jackson Enterprises, Transfleet Equipment, Transport & General Eng, Hick Bros. and more...

Engineering Services at a Glance

- Computer Aided Design (CAD)
- CNC turning (2 & 4 Axis)
- CNC milling (3 & 4 Axis)
- CNC routering (3 & 5 Axis)
- Conventional turning & milling
- CNC billet cutting
- Production keying
- Thickening
- Custom profiles
- Cut to size rod, tube & sheet
- Plastic fabrication
- Plastic & metal welding
- Magnetic particle inspection NDT
- Portable CMM inspection system

We've got you covered

AUCKLAND:

Unit 23, 761 Great South Road,
Penrose, Auckland 1061

P: +64 9 589 1705

E: sales.akl@supplyservices.co.nz

MT MAUNGANUI (HQ):

67 Newton St,
Mt Maunganui 3116

P: +64 7 575 0125

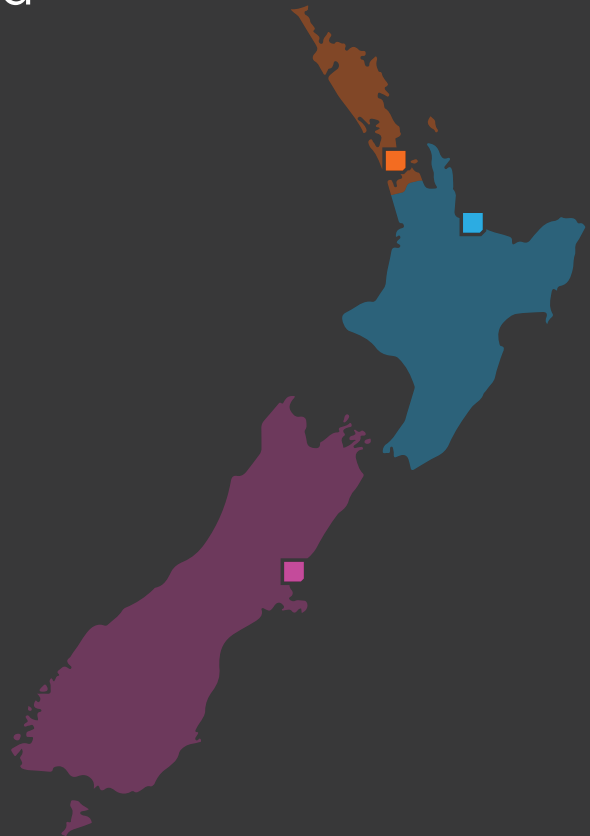
E: sales.mtm@supplyservices.co.nz

CHRISTCHURCH:

11 Dakota Cres, Sockburn,
Christchurch 8042

P: +64 3 341 7200

E: sales.chc@supplyservices.co.nz



SUPPLY SERVICES
performance engineering products



SUPPLYSERVICES.CO.NZ | 0800 102 112