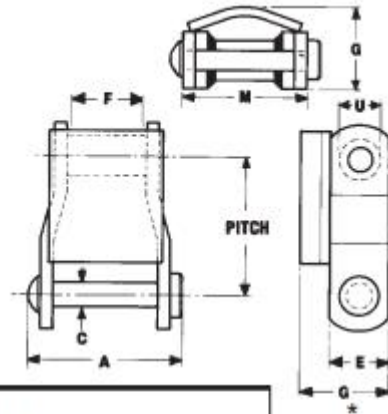


# SUPPLY SERVICES

performance engineering products

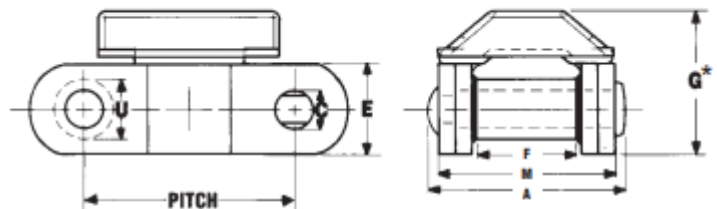
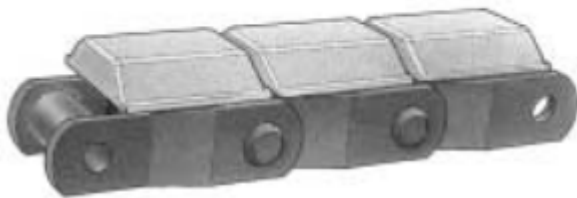
## ROOF TOP CHAINS

### CAN-AM WELDED STEEL UNIVERSAL TOP



Chain Number	Chain Pitch	Links per Foot	Weight per Foot in lbs	Dimensions in Inches						
				A	C	E	F	G*	M	U
WR-78 U	2.609	4.6	6.0	3	1/2	1 1/4	1	1 13/16	2 5/8	7/8
WR-78 XHDU	2.636	4.6	10.4	3.45	9/16	1 1/4	1	1.90	2 13/16	1
WR-82 U	3.075	3.9	8	3 1/2	9/16	1 1/4	1 1/8	2	3	1
WR-82 XHDU	3.075	3.9	13 1/2	4	3/4	1 1/2	1 1/8	2 3/8	3 5/16	1 1/4
WR-130/8U	4.000	3	4.8	3	1/2	1 1/4	1	1 13/16	2 5/8	7/8
WR-124 U	4.000	3	13.0	4 1/4	3/4	1 1/2	1 1/2	2 1/2	3 5/8	1 1/4
WR-124 XHDU	4.063	3	19.8	4 5/8	1	2	1 1/2	3 1/4	4 1/16	1 5/8

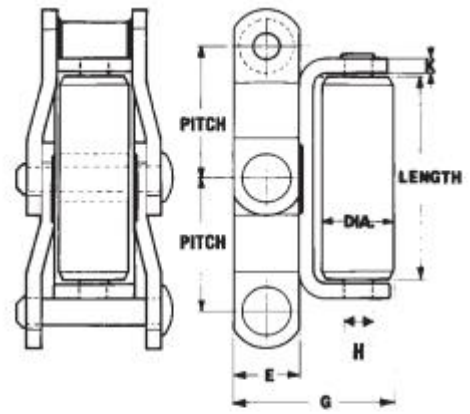
### CAN-AM WELDED STEEL CHAIN WITH U.H.M.W. CAP



Chain Number	Chain Pitch	Links per Foot	Weight per Foot in lbs	Dimensions in Inches						
				A	C	E	F	G*	M	U
WR-78 UP	2.609	4.6	5.4	3	1/2	1 1/4	1	1 15/16	2 5/8	7/8
81X UP	2.609	4.6	3.4	2 1/2	7/16	1 1/8	7/8	1 7/8	1 5/8	7/8



## STEEL ROLL TOP CHAIN WITH NYLON ROLLERS



Chain Number	Chain Pitch	Links per Foot	Weight per Foot in lbs.	Roller Length	Roller Dia.	Side Bar Width	Overall Height	Cradle Material	Roller Rivet Dia.
						E	G	K	H
WR-78RTN	2.609	4.6	7.85	4	1 1/4	1 1/4	3 1/8	1/4	1/2

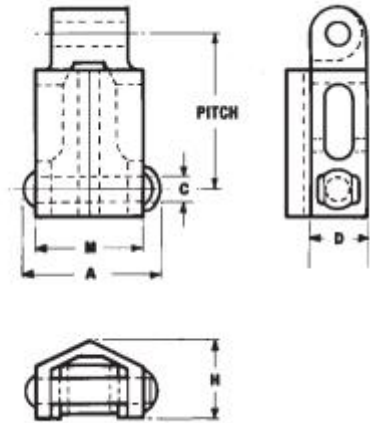
Standard rolltop chain supplied with solid nylon roller. WRC 78 (combination chain) styles also available.

## MALLEABLE CHAIN

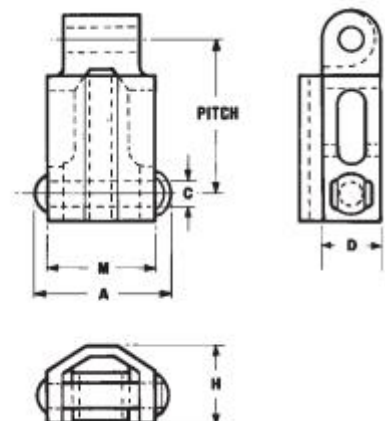
### MALLEABLE TRANSFER CHAIN

Rooftop and Camelback are widely used in the lumber industry on transfer decks, where the load is carried transversely on two or more strands of chain and entry or discharge is endways. Maximum advisable speed is 100 feet per minute.

### ROOF TOP H-78A, H-130



### CAMELBACK H-78B, H-138



## COMBINATION

**ROOF TOP C-55A**

**CAMELBACK C-55B**

**UNITOP C-55D**



**NOTE: Snap-on urethane caps available for non-marking applications.**

Chain Number	Average Pitch in Inches	Ultimate Strength lbs.	Links per Foot	Weight per Foot lbs.	Overall Width		Rivet Dia. C	Side bar Height D	Overall Height H
					A	M			
H-78A	2.609	16,000	4.6	5.6	3 1/4	2 3/4	1/2	1 1/16	1 11/16
H-78B	2.609	16,000	4.6	6.1	3 1/4	2 3/4	1/2	1 1/16	1 11/16
H-130	4.000	14,000	3.0	5.2	3 1/4	2 13/16	1/2	1 7/64	1 11/16
H-138	4.000	15,000	3.0	5.8	3 1/4	2 13/16	1/2	1 7/64	1 11/16
C55A, C55B, C55D	1.630	9,000	7.4	3.2	2	1.2	3/8	3/4	1 1/4

