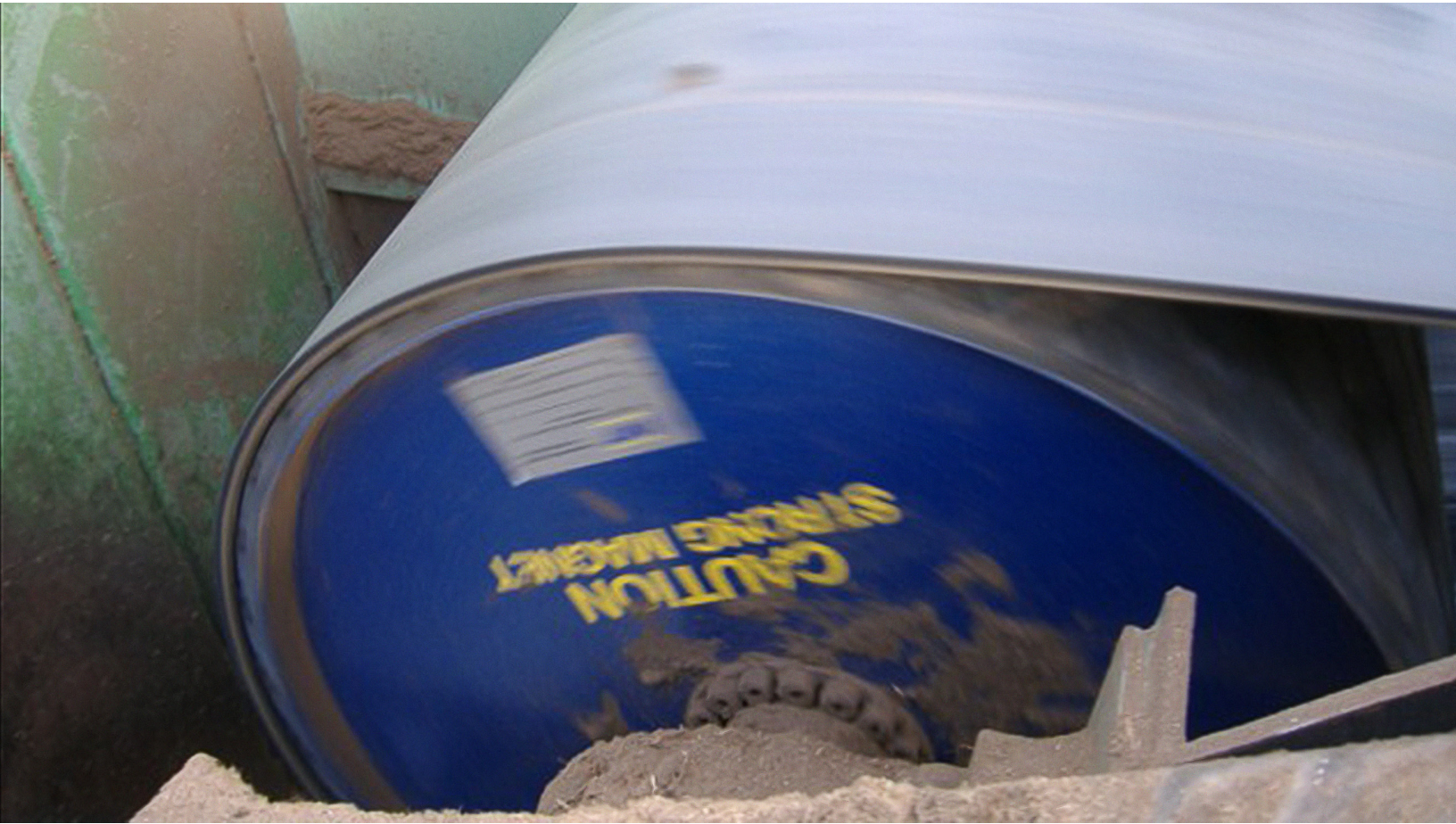




MAGNETIC HEAD PULLEYS



MAGNETIC HEAD PULLEYS FOR BELT CONVEYORS



- Superior Magnetic Strength
- Custom Sizes Available
- Flexible Installation Options
- In-stock Inventory



MAGNETIC HEAD PULLEYS

CONTINUOUS EXTRACTION OF TRAMP METAL FROM CONVEYOR BELT SYSTEMS

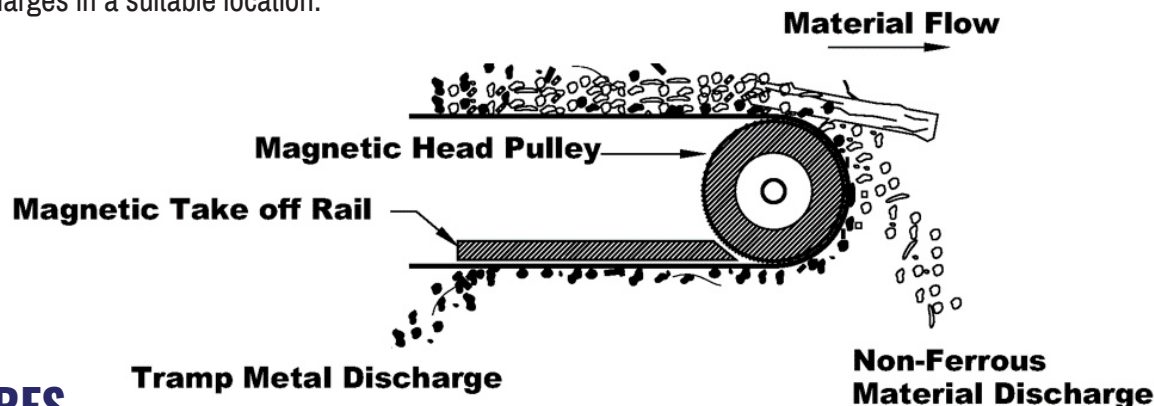


The IMT Magnetic Pulley is an industrial strength magnet which provides a dependable means of tramp metal extraction on conveyor belt applications. The permanent magnetic forces protect your capital equipment, increase uptime, reduce maintenance costs, and ensure highest product purity. Magnetic pulleys are used for reliable ferrous metal recovery in a wide variety of industries such as recycling, aggregate, and waste recovery operations.

MAGNETIC PULLEY OPERATION

A head pulley magnet is a self cleaning magnet which removes foreign tramp metals from bulk materials on a belt conveyor. The magnetic field adheres ferrous contaminants to the belt as clean product passes over the head pulley. Tramp metals from the underflow can be safely captured in a bin to be discarded.

The optional magnetic take off rail conveys captured tramp metal further down the return side of the conveyor. The take off rail paired with the IMT Magnetic Head Pulley allows for a more convenient and smoother release of retained tramp metal reducing belt wear while discharges in a suitable location.



FEATURES

It is critical to select the correct magnetic pulley for your operation; standard applications typically require IMT deep reach ceramic magnets while IMT high intensity neo rare earth magnets are used in more aggressive applications.

- Magnetic core available in Ceramic (Ferrite) and Rare Earth (Neodymium) configuration
- Size Ranges 10" and up (custom sizes available)
- Ease of installation into existing systems
- Guaranteed magnetic strength for the life of the application
- No power consumption



SUPPLY SERVICES

performance engineering products

SUPPLYSERVICES.CO.NZ | 0800 102 112