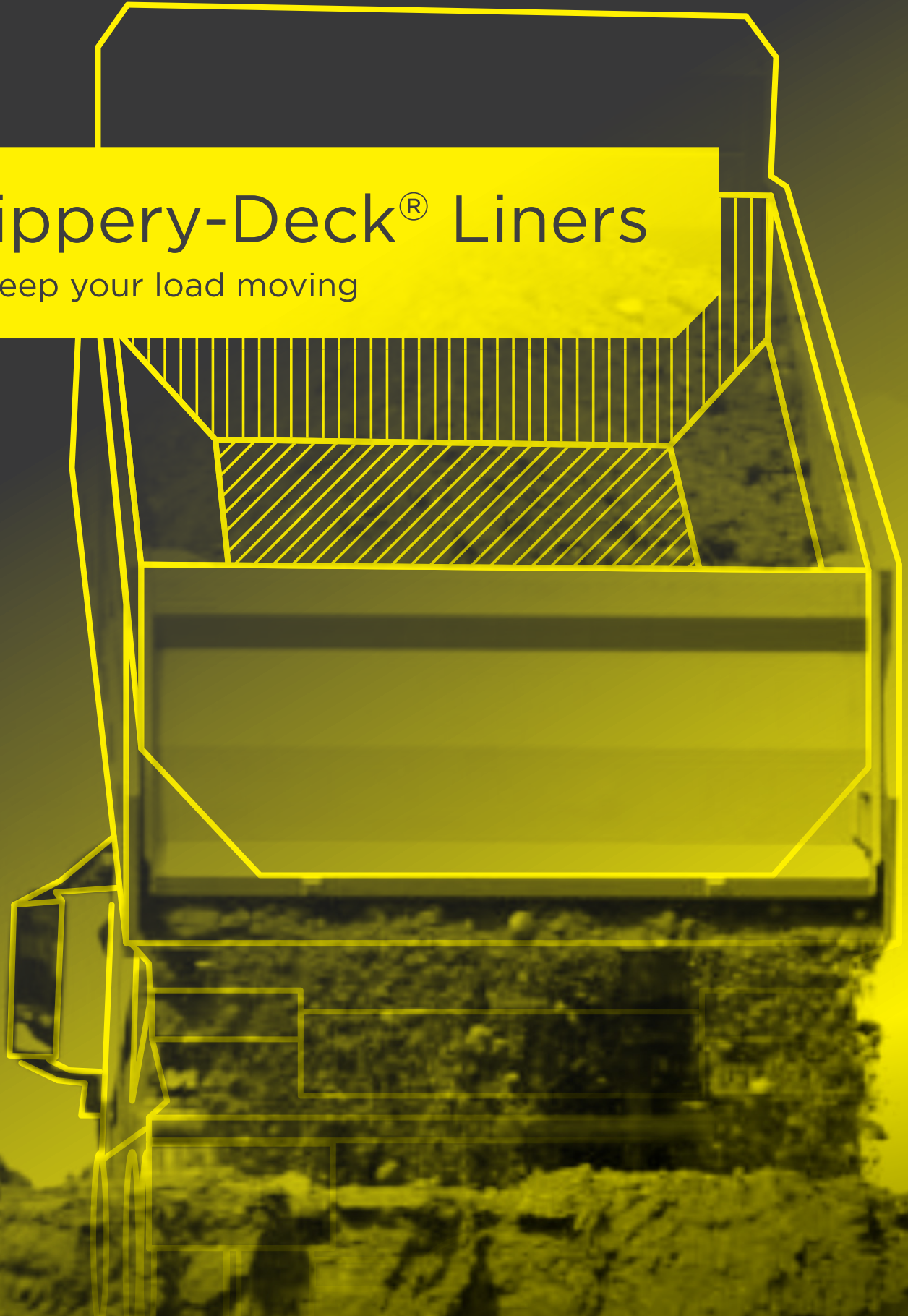


Slippery-Deck® Liners

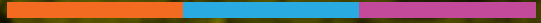
To keep your load moving



SLIPPERY-DECK®
PLASTIC TRUCK BODY LINERS



SUPPLY SERVICES
performance engineering products



SUPPLY SERVICES

performance engineering products

Truck Liners

To keep your load moving

Slippery-Deck® - the original truck and trailer deck lining solution for NZ. Our super slippery truck deck liners are manufactured in Germany and the USA from premium grades of PE polymer. Eliminate sticking, reduce carry back, stop shoveling, improve your productivity and make more money!

01 | **SLIPPERY-DECK®
BLACK**

02 | **SLIPPERY-DECK®
PREMIUM BLUE**

05 | **SLIPPERY-DECK®
OFF ROAD**

06 | **SLIPPERY-DECK®
WHITE**

06 | **SLIPPERY-DECK®
HIGH TEMP**

07 | **SLIPPERY-DECK®
CUSTOM**

07 | **FREQUENTLY
ASKED QUESTIONS**





⊕ **Virtually eliminates sticking**

Loads slide out easier

Dump loads quicker

Reduce wear and tear

Move more loads and make more money

⊕ **Slippery-Deck® will dramatically reduce your tipping angle**

Tip under warehouse roofs

Tip under outdoor overhead obstacles

Reduce chances of a roll over

⊕ **Slippery-Deck® Liners are covered by our manufacturer's warranty**

Full warranty for durability and protection.

⊕ **Our experienced installers work nationwide**

Awesome!

Whatever you're engineering,
we can help.

Our customer support is
only a phone call away -

📞 **0800 102 112**



Slippery-Deck® Black

SLIPPERY-DECK® Black is a heavy duty UHMW-PE polymer for demanding applications. Our most popular product.

SLIPPERY-DECK® Black is virgin UHMW-PE polymer combined with a release agent for enhanced sliding properties. It is 2-3 times more wear resistant than aluminium and UV resistant.

SPECIFICATIONS

THICKNESS	12.5mm
WIDTH	3050mm
LENGTH	up to 50m
WEAR RESISTANCE	Excellent (100)

Not suitable for use with hot products such as asphalt.



Slippery-Deck® Premium Blue

SLIPPERY-DECK® Premium Blue is an enhanced UHMW-PE polymer for improved wear and impact resistance for the ultimate in performance. It is UV stabilised and also has EU and FDA approval for contact with food products.

SPECIFICATIONS

THICKNESS	12.5mm
WIDTH	3050mm
LENGTH	up to 50m
WEAR RESISTANCE	Premium (120)

Not suitable for use with hot products such as asphalt.



CAUTION SLIPPERY-DECK®

CAD

We can manipulate your CAD models and drawings or create them for you from your parts or sketches. If required, we can design your parts from scratch.

Our CAD engineers are able to design complex parts and assemblies from our range of engineering materials that are in use across all industry sectors. They even design sprockets and bottling line change parts.

Cut to size plastics

Plastic rods, tubes, sheets and films- we have every size, grade and type of engineering plastic available from leading global manufacturers. We can provide off-the-shelf or manufactured parts to your specifications.

We also stock a comprehensive range of specialist OEM plastic products for the wood processing industry. No matter where you are in New Zealand, we're right there with you.

Welding, Assembly & Fabrication

We work across all industry sectors manufacturing high quality parts, fabricating and assembling them at our site to reduce interruption to your production.

Full Service Start to finish

All three of our nationwide branches are fully staffed with manual and CNC machining. We are stocked with engineering plastic and associated parts. No matter what you need, we have the people and the equipment to get it done.

SUPPLY SOLUTIONS
performance engineering



Conventional & CNC machining

Our three machining shops located across New Zealand is where the magic happens.

As well as conventional turning and milling capabilities, we have skilled CNC operators who can turn your material or idea into components. Our machine shops can make finished parts from any of our engineering materials or composites.

Service
n, nationwide.

branches offer CAD design, machining services; all are fully plastics, chains, sprockets and where you are in the country, the know-how to help you out.

SERVICES
Engineering products

Reverse engineering

Give us your part and we'll recreate it, even if its broken or worn out.

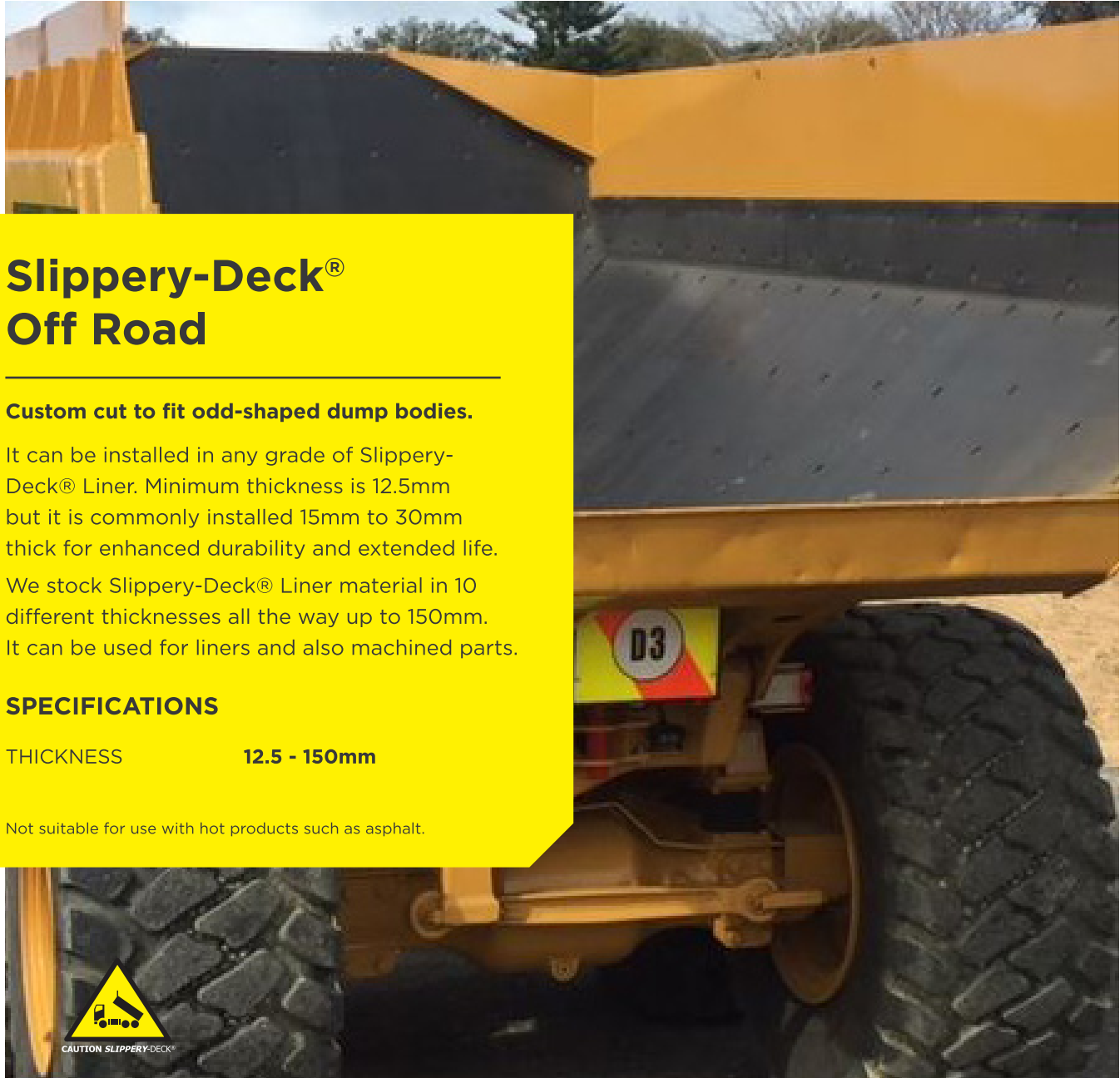
We've invested heavily in technology and training to help our customers replace old parts with new ones. We can hard probe or use contactless 3D laser scanning techniques to digitise your component and reverse engineer it, and then in the machine shop make the parts.

Inventory & Warehousing

Do you need a regular supply of components but have nowhere to store them?

We can manufacture your parts, stock them in our secure warehousing facilities and dispatch when you need them, charging you as you go.

Our end-to-end procurement, storage and installation service eases cashflow and ensures your parts are on hand when you need them.



Slippy-Deck® Off Road

Custom cut to fit odd-shaped dump bodies.

It can be installed in any grade of Slippy-Deck® Liner. Minimum thickness is 12.5mm but it is commonly installed 15mm to 30mm thick for enhanced durability and extended life.

We stock Slippy-Deck® Liner material in 10 different thicknesses all the way up to 150mm. It can be used for liners and also machined parts.

SPECIFICATIONS

THICKNESS **12.5 - 150mm**

Not suitable for use with hot products such as asphalt.



Before

At least 3m³ was going back for the ride



After

Operator estimated 8 weeks pay back



Slippy-Deck® White

Slippy-Deck® White is a lower cost HMW-PE polymer and only suitable for non-abrasive products such as dirt, clay, grain, wood chip, snow etc.

Loads slide easier. Protects your truck deck. UV stabilised. SLIPPY-DECK® White is 3-4 times less wear resistant than SLIPPY-DECK® Black. When hauling abrasive products SLIPPY-DECK® Black or Premium Blue must be used.

SPECIFICATIONS

THICKNESS	9.5mm
WIDTH	3000mm
LENGTH	up to 45m
WEAR RESISTANCE	Low (25-33)

Not suitable for use with hot products such as asphalt.



Slippy-Deck® High Temp

Slippy-Deck® High Temp is a heat stabilised UHMW-PE polymer formulated for working with hot products and asphalt.

Please phone to discuss your SLIPPY-DECK® High Temp application. High temperature applications require specific installation and operating procedures. A trial installation may be required.

SPECIFICATIONS

THICKNESS	12.5mm
WIDTH	3050mm
WEAR RESISTANCE	Premium (120)

Slippery-Deck® Custom

SLIPPERY-DECK® Liner rolls can be made in thicknesses of 6mm to 15mm, widths of 3050mm to 4060mm, lengths up to 50m.

This can be particularly useful for lining higher up the sidewalls of trailers or for lining the insides of large hoppers.

Not to mention providing solutions to many other problems where toughness, wear resistance and a slippery surface is required.



Hopper Liners



Digger Buckets



Conveyor Pulleys



Screw Conveyor Linings

- ⊕ **What is UHMW-PE?**
UHMWPE stands for **ultra high molecular weight polyethylene**. It is the most abrasion resistant grade of polyethylene by far and is often referred to as the worlds toughest polymer.
- ⊕ **Where is Slippery-Deck® made?**
SLIPPERY-DECK® is produced by our suppliers in Germany and the USA from high quality polyethylene PE resins.
- ⊕ **How much weight will a Slippery-Deck® Liner add to my trailer?**
The standard 12.5mm x 3,050mm product will add approximately 40kg per metre of liner.
- ⊕ **How long will a Slippery-Deck® Liner last?**
This depends on what you are dumping, how often and the condition of your deck. Generally speaking a SLIPPERY-DECK® Black liner will last 2-3 times longer than aluminium.
- ⊕ **Can a Slippery-Deck® Liner be repaired?**
Yes. Liners sometimes get damaged by digger buckets etc. We can cut pieces out and weld new pieces in.

- ⊕ **What can I do to make my Slippery-Deck® Liner last longer?**
Check the liner regularly and remove any material such as stones that may have gotten underneath it (your installer can show you how to do this). Foreign matter under the liner will cause high spots that will prematurely wear through.
- ⊕ **Is there anything I shouldn't put on a Slippery-Deck® Liner?**
Sharp objects like demolition material can damage or puncture a liner. If you have to occasionally cart this type of material then you can put down a layer of finer crushed material first.
- ⊕ **How is a Slippery-Deck® Liner held in my trailer?**
Normally the liner is bolted through the deck at the head board and sits under a steel or aluminium flashing that runs down each side of the walls. Plastic liners expand and contract with changes in temperature during the day, so they can only be fastened at one end. The alternative, as is done in OFF ROAD liners, is to completely fasten them down.

Flashing & Fasteners

Edge flashings for welding or bolting into place

Aluminium extrusion
5mm thick, 153mm high, 3m lengths
Steel available as well.

Fasteners to secure the Liner

Zinc plated elevator bolts 1/2" UNC
Steel weld washers



+ Can I get Slippery-Deck® Liner in any other colours?

Yes. Black, blue and white are the standard colours but if you need a corporate colour we can do that too. You may have already seen our dark grey, red and light blue liners on the road.

+ How long does it take to install a Slippery-Deck® Liner?

An experienced team of 2 people can install a liner in 4-8 hours.

+ Will I know anyone who has a Slippery-Deck® Liner in their truck or trailer?

Most likely as we have been fitting SLIPPERY-DECK® Liners for over 20 years in New Zealand. These are some of our satisfied customers:

*Fulton Hogan, Taylor Bros Transport,
Winstone Aggregates, Stevenson Group,
Higgins Contractors, P&I Pascoe,
Warren McLean Cartage, J. Swap Contractors,
Inframax Construction, Atlas Concrete,
Firth, Road Metals, Jackson Enterprises,
Transfleet Equipment, Transport & General Eng,
Hick Bros Allied Concrete and more...*

+ Can I put hot materials on my SLIPPERY-DECK® Liner?

Hot asphalt can only be put on a SLIPPERY-DECK® High Temp liner. SLIPPERY-DECK® High Temp liners require special installation and operating procedures.

Other SLIPPERY-DECK® Liners can handle warm loads up to 80°C. Higher temperatures will cause structural damage to the liner.

All PE liners expand as they get warm. Any warm load will create greater than normal thermal expansion which may not have been allowed for in the installation. Carry warm loads with care.

+ Are SLIPPERY-DECK® Liners corrosion resistant?

Yes, all SLIPPERY-DECK® Liners are very resistant to chemical attack. The fasteners and flashings in your SLIPPERY-DECK® installation might not be! If you are carting materials which may be corrosive please discuss this with your installer.

Engineering Services at a Glance

- Computer Aided Design (CAD)
- CNC turning (2 & 4 Axis)
- CNC milling (3 & 4 Axis)
- CNC routering (3 & 5 Axis)
- Conventional turning & milling
- CNC billet cutting
- Production keying
- Thickening
- Custom profiles
- Cut to size rod, tube & sheet
- Plastic fabrication
- Plastic & metal welding
- Magnetic particle inspection NDT

We've got you covered

AUCKLAND:

Unit 23, 761 Great South Road,
Penrose, Auckland 1061

P: +64 9 589 1705

E: sales.akl@supplyservices.co.nz

MT MAUNGANUI (HQ):

67 Newton St,
Mt Maunganui 3116

P: +64 7 575 0125

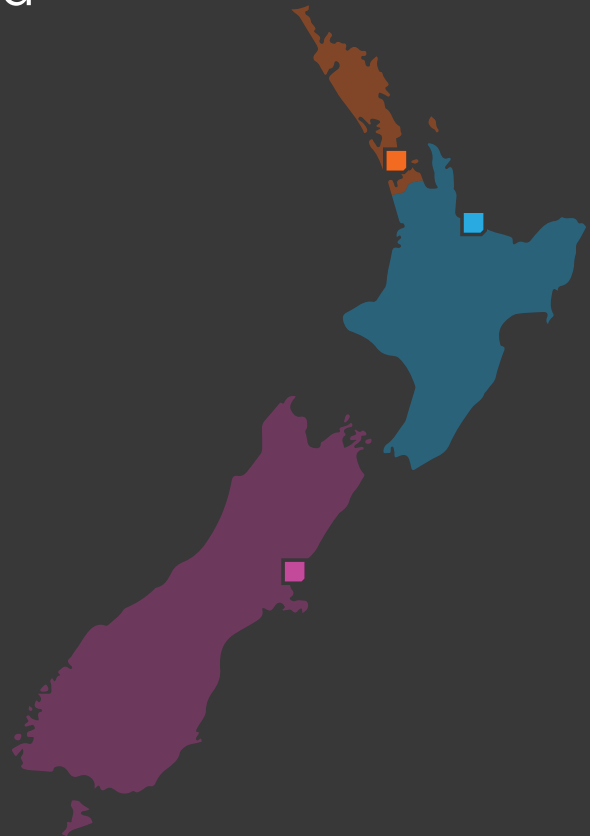
E: sales.mtm@supplyservices.co.nz

CHRISTCHURCH:

11 Dakota Cres, Sockburn,
Christchurch 8042

P: +64 3 341 7200

E: sales.chc@supplyservices.co.nz



SUPPLY SERVICES
performance engineering products



SUPPLYSERVICES.CO.NZ | 0800 102 112